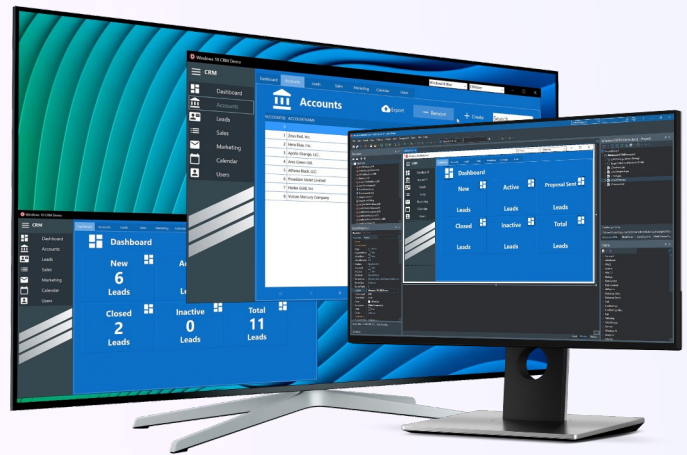




C++Builder 11.3

C++Builder® is an advanced IDE for modern C++, with high-productivity libraries that help developers quickly build high-performance native apps for Windows and iOS

- ✓ Target Windows 11, iOS 15, and Android 13 (32-bit)
- ✓ Design on high-DPI 4k+ screens
- ✓ View VCL Styles in design time
- ✓ New & modernized VCL components
- ✓ Use enhanced remote desktop support to collaborate remotely



Benefits

BUILD C++ APPS THE SMART WAY

C++Builder is a powerful rapid application development environment featuring a modern C++ integrated toolchain to significantly boost developer productivity through the entire product life cycle. The integrated toolchain, modern C++ features, extensive database support, and award-winning visual designer allows you to focus on building great apps and confidently deliver projects up to 10x faster than competing solutions.

RAPIDLY BUILD RESPONSIVE UIs

Quickly advance from concept to prototype to the envisioned app UI with C++Builder's visual design tools 10x faster than competing solutions. Accelerate projects with our award-winning Visual Component Library for Windows and our FireMonkey (FMX) framework for multi-device work. VCL enables modern high DPI Windows styling, and FMX simplifies responsive multi-device UI design. C++Builder delivers high-performance platform aware experiences for your customers while improving developer productivity with hundreds of prebuilt components, Live On-Device Preview, and easy to customize layouts.

EASILY DEPLOY NATIVELY TO WINDOWS AND iOS

Quickly compile modern C++ using enhanced Clang compilers and rapidly deploy high-performance visually stunning native apps to Windows and iOS. Programming a single codebase makes cross-platform development easier to maintain.

QUICKLY BOOST DEVELOPMENT CYCLES

In a Continuous Integration/Continuous Delivery world, developers depend on tools that reduce software development cycles and increase productivity. C++Builder has MSBuild, CMake, and Ninja support allowing you to easily tie into your existing CI systems. Code tooling powered by cquery gives fast and correct code completion, as well as showing errors inline in the editor before you compile. Enhanced macro and copy and paste features speed up repetitive tasks. Bookmarks and collapsible regions speed up code navigation when working on large blocks of code. Whether you're a junior developer or an expert, C++Builder gives you that productivity edge.

CODE FASTER AND SMARTER

There are tons of C++Builder advantages to improve productivity: modern C++ support, powerful native Windows and cross-platform libraries containing well-tested and highly optimized code. Easily integrate with version control systems including Git, Subversion and Mercurial. With all of these resources at your command, you can focus on quickly creating elegant sustainable code solutions 10x faster than competing solutions.

QUICKLY DEBUG APPLICATIONS

Get to the bottom of bugs faster with integrated cross-platform native debugging. Explore the entire call stack so you can trace backward to rapidly discover the route the executing code took to reach the current location. Using the C++Builder IDE you can debug applications running remotely on Windows and iOS! Use breakpoints, stack exploration, tool tips and expression evaluation on local and remote machines with live debugging to boost productivity.

Key Features

HUNDREDS OF PREBUILT COMPONENTS

Hit the ground running with our easily customize pre-built, time tested, and professionally supported UI components for your application.

VISUAL COMPONENT LIBRARY (VCL)

VCL developers have reported a massive productivity boost of up to 10 times faster development using the VCL framework compared to other UI creation methods. VCL accomplishes this by offering powerful responsive components wrapping real native Windows controls which enables developers to rapidly turn their imagined user interfaces into reality without spending hours learning every Windows API.

INSTANTLY CREATE SERVICES-BASED SOFTWARE

RAD Server enables developers to quickly build new application back-ends or migrate existing C++ client/server business logic to a modern REST services-based architecture that is open, stateless, secure and scalable. Utilize features like enterprise level permissions, built-in data store, and easy Swagger API compatible documentation. Enterprise and Architect editions include RAD Server deployment licenses.

EASILY PUBLISH TO APP STORES

Rapidly produce application bundles that work on Microsoft Store using MSIX packaging, as well as on Apple Store.

FIREMONKEY FRAMEWORK (FMX)

The fast cross-platform UI framework supporting DirectX, OpenGL, and Apple's Metal API lets you quickly build visually stunning responsive native apps.

BOOST PRODUCTIVITY WITH FIREDAC

Rapidly develop high-performance database applications: with its powerful common architecture and built in data binding technologies, FireDAC enables native high-speed direct access from C++Builder to InterBase, SQLite, MySQL, SQL Server, Oracle, PostgreSQL, IBM DB2, SQL Anywhere, Access, Firebird, Informix and more. Optional Enterprises Connectors give easy access to popular enterprise REST data sources.

GETIT PACKAGE MANAGER

Rapidly increase the functionality of your applications by downloading and integrating new components and popular libraries like Boost and Eigen, without leaving the IDE.

CUSTOMIZABLE IDE THEMES

Productively code in comfort with modern customizable light and dark themes.

EMBEDDABLE SECURE DATABASE

Productively create lightweight, embedded database apps using the included InterBase ToGo 2020 or IBLite 2020 licenses. InterBase ToGo 2020 includes database and column level encryption.

FIRST YEAR UPDATE SUBSCRIPTION

C++Builder licenses are perpetual, but Update Subscription ensures you have all the latest features every new release as long as your subscription is active.



System Requirements

- A PC or tablet running Microsoft Windows 10 or Windows 11 64-bit (or a VM with the same operating systems running any compatible hardware platform, locally or remote)
- 1.8 GHz or faster dual-core processor. Quad-core or better recommended. Single-core is not supported.
- 6-60 GB of available disk space depending on edition and configuration. Using a solid state drive (SSD) is strongly recommended.
- 3 GB RAM (8 GB RAM recommended)
- DirectX 11 capable video card that runs at 1,440x900; a 1,080 vertical resolution screen is recommended.

Platform Requirements

Windows PCs and tablets running Windows 11, Windows 10, Windows 7 (SP1+), Windows Server 2022, 2019 and 2016. For 64-bit Windows apps: PC running a 64-bit version of Windows.

Android An Android device that runs on AArch64 processors or ARMv7 processors with NEON support and running Android versions 13 (32-bit), 12, 11, 10, 9 and 8.1.

iOS All requirements for macOS support plus a recent version of Xcode 12. An Apple Developer account is required to deploy iOS apps to physical devices, an iPhone or iPad running iOS 15 or iOS 14.